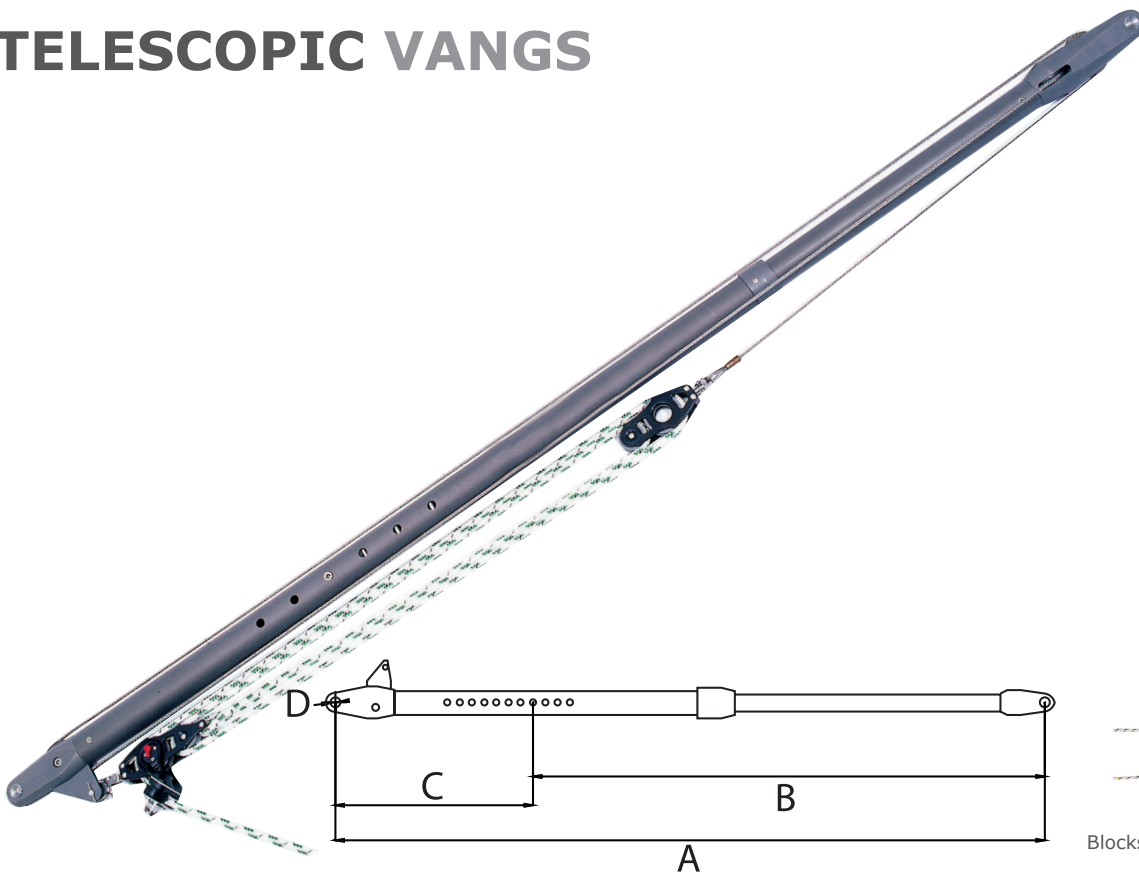


TELESCOPIC VANGS

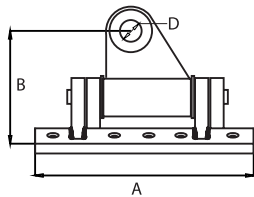
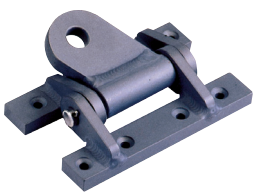


Blocks included, rope not included

Part No.	Internal Ratio	Boat Length (ft)	A (mm)	B (mm)	C (mm)	D (mm)	Sail Area (m ²)	Weight (g)	SWL (kg)
HT91342	2:1	24-32	1340	1140	200	10	25	2.4	150
HT91330	3:1	29-37	1800	1550	150	13	35	6	300
HT91334	4:1	38-44	2150	1900	250	16	45	7	450
HT91338	5:1	45-55	2350	2150	350	16	60	12	450

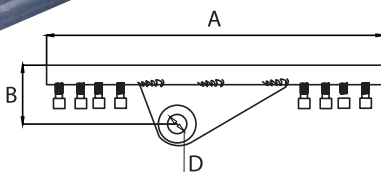
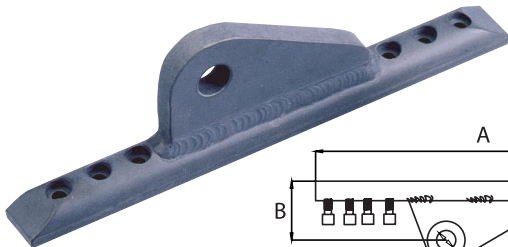
TELESCOPIC VANGS FITTINGS

VANG MAST FITTINGS



Part No.	Description	A (mm)	B (mm)	Dia (mm)	Fixing size
HT91343	Mast fitting for HT91330 & HT91342	110	50	10	M6 x 20
HT91332	Mast fitting for HT91330 & HT91342	138	65	13	M6 x 20
HT91336	Mast fitting for HT91334	148	70	16	M6 x 20
HT91340	Mast fitting for HT91338	173	90	16	M6 x 20

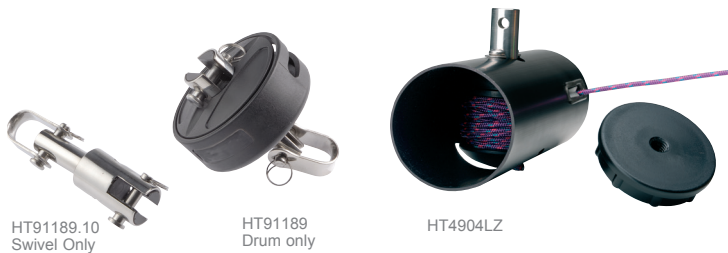
VANG BOOM FITTINGS



Part No.	Description	A (mm)	B (mm)	Fixing size
HT91344	Boom fitting for HT91342	160	67	M6 x 15
HT91333	Boom fitting for HT91330	210	80	M6 x 15
HT91337	Boom fitting for HT91334	250	97	M6 x 15
HT91341	Boom fitting for HT91338	320	123	M6 x 15



FURLERS SYSTEMS



HT91189.10
Swivel Only

HT91189
Drum only

HT4904LZ

Part No.	Description	SWL (kg)	Break Load (kg)	Weight (g)
HT91189.10	Dinghy Top Swivel	250	500	136
HT4904LZ	Dinghy Integral Bow/Chute Furler	400	800	212
HT91189	Dinghy Furler	250	500	110

PRO-FEEDER



HT62483115

The Pro-Feeder is made of 316 stainless steel and like other similar products, has a catch and a hinge that means it can be opened easily with a quick positive tug when required. It has rolling balls to reduce friction and aid in the smooth running of hoists and drops.

This product is designed with real time racing in mind where a cluster disaster can cost the race – if the luff is in trouble the pull piston action requires a simple strong tug – the piston is out of the way of the luff and therefore easier to open than other feeders. The hinge on this pro feeder is offset from the centre line – this mean the bowman can lash it to or around the forestay.

WIND INDICATORS

WIND INDICATORS



HT.167



HT.168



HT.169



HT4066



HT5166

Now available to order as single colours

Description	Part No.	Colours	Flag Size (mm)	Shaft Length (mm)	Weight (g)
10 Racing Pro-Flag	HT.167ASS*10	Assorted	110 x 120	410	30
10 Racing Short Shaft Pro-Flag	HT.168ASS*10	Assorted	110 x 120	270	26
10 Cruising Pro-Flag	HT.169ASS*10	Assorted	170 x 120	410	30
Burgee Clip for mast	HT4066	-	-	-	-
Solid mast front mount Wind Vane for Oppy, Laser	HT5166	Orange	-	-	-
Pennant wind vane	HPN300	Red			
Arrow wind vane	HNP301	Red			

SAIL TRIM

WIND INDICATORS

WINTEC



- **Strong & sturdy**
Framework in hard anodised alloy, rotating pivot in stainless steel
- **Accurate even in a light breeze**
Light pointer and tail made of robust UV resistant composite
- **Visible at night**
Fluorescent paint under pointer, tail & arms
- **Multiple mounting options**
Bracket for horizontal or vertical mounting with a stainless steel nilstop & 8mm nut
- **Adjustable**
The reference arms are adjustable (template supplied) according to the tacking angle capability of each boat
- **Maintenance**
Spare parts available

Part No.	For Boat Length (m)	For Boat Length (ft)	Weight (g)	Weight (oz)	H (mm)	H (inch)
HT91170	11	33	140	5.64	300	12
HT91180	16	51	145	5.96	387	15
HT91190	18	60	155	6.03	457	18
HT91159	Plastic part kit					

FLAG CLIPS

FLAG CLIPS



HT..74



HPN016

HPN016B

Part No.	Description	Max Rope Dia. (mm)	Length (mm)	Thickness (mm)	Weight (g)
HT..74	Spinnaker clip	6	36	4	7
HPN016	Sister clip Nylon large	7	39	9	2.4
HPN016B	Sister clip Nylon small	3	22	4	1.2

NYLON SNAP HOOKS

SNAP HOOK RANGE

57MM Hole Centres

57MM Hole Centres



HPN004



HPN005



HPN013A



HPN013B



HPN021



HPN021A



HPN022



HPN022A



HPN033-WHITE



HPN045-WHITE



HPN056



HPN056B



HPN092

NEW SELF LOCKING SHOCKCORD HOOK

3-4mm Shockcord



HPN388



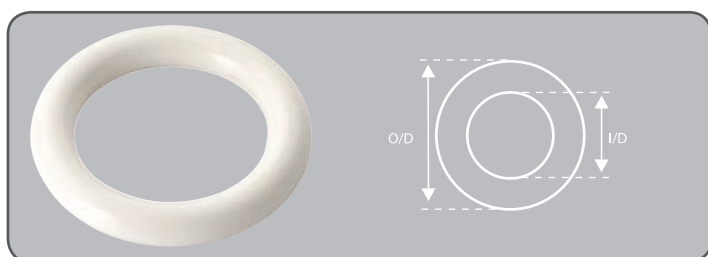
Shockcord end pushes into end and snaps tight

HPN164

Part No.	Description	Length
HPN004-White	screw on hook - white	42
HPN005-Black	snap fairlead - black	74
HPN013A-White	snap hook, white	59
HPN013B-Black	snap hook small - black	45
HPN021-White	thread on snap hook large	59
HPN021A-White	thread on snap hook small	36
HPN022-White	shockcord hook, 6mm	50
HPN022A-White	shockcord hook, 5mm	35
HPN025A-GREY	closed leech line cleat - grey	-
HPN025-GREY	open leech line cleat - grey	-
HPN032-BLACK	lacing buckle - black	-
HPN033-BLACK	lacing eye - black	-
HPN033-WHITE	lacing eye - white	-
HPN045-BLACK	deck hook - black	-
HPN045-WHITE	deck hook - white	-
HPN056-WHITE	shockcord hook 7mm - white	52
HPN056B-BLACK	shockcord hook 5mm - black	46
HPN056B-WHITE	shockcord hook 5mm - white	46
HPN084-vWHITE	lacing hook (not shown)	27
HPN084-BLACK	lacing hook (not shown)	27
HPN092-BLACK	lacing hook	32
HPN387-BLACK	small 3 - 5mm shock cord	-
HPN388-WHITE	medium 3 - 5mm shock cord	-
HPN388-BLACK	medium 3 - 5mm shock cord	-
HPN389-WHITE	large 5 - 8mm shock cord	-
HPN389-BLACK	large 5 - 8mm shock cord	-

NYLON RINGS

NYLON RING RANGE



Part No.	Description	ID (mm)	OD (mm)
HPN012-white	nylon ring	8	17
HPN052A-white	nylon ring	13	21
HPN052C-white	nylon ring	20	30
HPN053A-white	nylon ring	17	26
HPN265-white	nylon ring	22	38
HPN266-white	nylon ring	28	46

NYLON TUBE CLIPS

NYLON CLIPS RANGE

LAY DOWN PADDLE CLIP

Lies flat on deck when not in use



HPN036B - 32MM
HPN036C - 27MM-29MM



HPN043A



HPN043B



HPN043C



HPN043D



HPN043E



HPN043F

Part No.	Description	Tube Dia (mm)
HPN036B-BLACK	lay down paddle clip 32mm	32
HPN036-BLACK	single screw lacing eye black	32
HPN036C-BLACK	lay down paddle clip 27mm-29mm	27-29
HPN043A-BLACK	tube clip 50mm - black	50
HPN043A-WHITE	tube clip 50mm - white	50
HPN043B-BLACK	tube clip 40mm, in black	40
HPN043B-WHITE	tube clip 40mm, in white	40
HPN043C-BLACK	tube clip 30mm, in black	30
HPN043C-WHITE	tube clip 30mm, in white	30
HPN043D-BLACK	tube clip 25mm, in black	25
HPN043D-WHITE	tube clip 25mm, in white	25
HPN043E-WHITE	tube clip 16mm - white	16
HPN043E-BLACK	tube clip 16mm - black	16
HPN043F-BLACK	tube clip 20mm, in black	20
HPN043F-WHITE	tube clip 20mm, in white	20

NYLON THIMBLES

NYLON THIMBLES



HPN070
HPN078-WHITE
HPN078A-WHITE
HPN078B-WHITE
HPN078C-WHITE

HPN076

Part No.	Description	Line Size (mm)
HPN062-WHITE	thimble, 2mm	2
HPN070	thimble, 8mm	8
HPN076-BLACK	thimble, 6mm rail line dropper	6
HPN078-WHITE	thimble 8mm - white	8
HPN078A-WHITE	thimble 10mm - white	10
HPN078B-WHITE	thimble 12mm - white	12
HPN078C-WHITE	thimble 16mm	16
HPN076	thimble, 6mm rail line dropper	6

MAST ACCESSORIES

MASTS ACCESSORIES RANGE



Part No.	Description
HPN200A-BLUE	mast chock curved, 10mm - blue
HPN200B-BLUE	mast chock flat, 10mm - blue

Both products shown in image

ROPE STOPPERS

ROPE STOPPER RANGE



ROPE STOPPERS
Available in 4 colours:
red, blue, green & black

Sizes:

	OUTER	MAX ROPE
50MM	40MM	12MM
A 32MM		7MM
B 25MM		6MM
C 20MM		5MM
D 16MM		



HALYARD STOPPER
Available in 4 colours:
red, blue, green & black

Sizes:

	OUT
A 32MM	
C 16MM	20MM

Part No.	Description
HPN070-BLACK	tie ball, 50mm black
HPN070-GREEN	tie ball, 50mm green
HPN070-RED	tie ball, 50mm red
HPN070-WHITE	tie ball, 50mm white
HPN070-BLUE	tie ball, 50mm blue
HPN070-GREEN	tie ball, 50mm green
HPN070-RED	tie ball, 50mm red
HPN070A-BLACK	tie ball, 32mm black
HPN070A-BLUE	tie ball, 32mm blue
HPN070A-GREEN	tie ball, 32mm green
HPN070A-RED	tie ball, 32mm red
HPN070A-WHITE	tie ball, 32mm white
HPN070B-BLACK	tie ball, 25mm black
HPN070B-BLUE	tie ball, 25mm blue
HPN070B-GREEN	tie ball, 25mm green
HPN070B-RED	tie ball, 25mm red
HPN070B-WHITE	tie ball, 25mm white
HPN070C-BLACK	tie ball, 20mm black
HPN070C-BLUE	tie ball, 20mm blue
HPN070C-GREEN	tie ball, 20mm green
HPN070C-RED	tie ball, 20mm
HPN070C-WHITE	tie ball, 20mm white
HPN070D - BLACK	tie ball, 16mm black
HPN070D-BLUE	tie ball, 16mm blue
HPN070D-GREEN	tie ball, 16mm green
HPN070D-RED	tie ball, 16mm red
HPN070D-WHITE	tie ball, 16mm white
HPN272A-BLACK	halyard stopper ball, 32mm
HPN272D-BLACK	halyard stopper ball, 16mm

Part No.	Description
HPN272A-BLUE	halyard stopper ball, 32mm
HPN272A-GREEN	halyard stopper ball, 32mm
HPN272A-RED	halyard stopper ball, 32mm
HPN272A-WHITE	halyard stopper ball, 32mm
HPN272D-BLUE	halyard stopper ball, 16mm
HPN272D-GREEN	halyard stopper ball, 16mm
HPN272D-RED	halyard stopper ball, 16mm
HPN272D-WHITE	halyard stopper ball, 16mm

SPINNAKER SHACKLE GUARDS

SPINNAKER SHACKLE GUARD RANGE



SPINNAKER SHACKLE GUARDS
Can also be used as trapeze line handles on dinghies

Part No.	Description
HPN197-GREEN	trapeze / spinnaker beak guard 40mm
HPN197-RED	trapeze / spinnaker beak guard 40mm
HPN197-RED	trapeze/spinnaker beak guard 40mm
HPN198-BLUE	trapeze / spinnaker beak guard 60mm
HPN198-RED	trapeze / spinnaker beak guard
HPN198-RED	trapeze / spinnaker beak guard
HPN198-GREEN	trapeze / spinnaker beak guard
HPN198-GREEN	trapeze / spinnaker beak guard
HPN199-GREEN	spinnaker beak guard 70mm
HPN199-GREEN	spinnaker beak guard 70mm
HPN199-RED	spinnaker beak guard 70mm

POLE LAUNCHER

CAST CHASIS

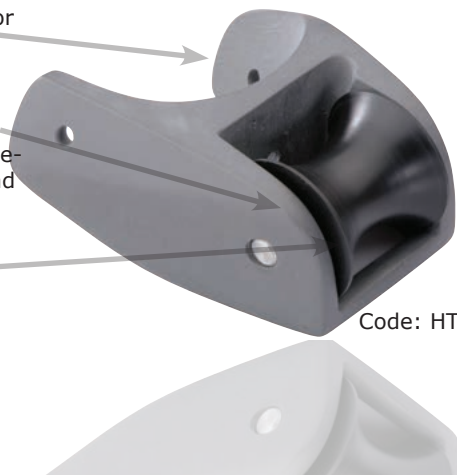
Cast aluminium chasis with tolerance to fit popular mast sections (minor fairing may be required).

SEALED BEARING SYSTEM

Sealed stainless thrust bearings reducing friction when launching and recovering the spinnaker pole

DELRIN® SHEAVE

Hard wearing and greater UV stability



Code: HT.932

USAGE ▼

Most mounted spinnaker pole launcher suitable for Squibs, 505's and Fireballs



HIGHFIELD LEVERS

HIGHFIELD LEVER RANGE



HT4160 (MELGE)



HT4260



HT4260-1

Part No.	Throw (mm)	Adjust (mm)	Back Plate Size (mm)	No. of Adjust.	Weight (g)
HT4160	70	-	16 x 2	-	100
HT4260	75	63	16 x 2	6	193
HT4260-1	75	-	12 x 5	-	111

STAINLESS HOOKS

STAINLESS HOOK RANGE



HT4659



HT4159



HT4259



HT4869K



HT4969



HT4869

Part No.	Max Rope Size (mm)	Length (mm)	Weight (g)
HT4659	10	67	19
HT4159	10	67	20
HT4259	10	61	27
HT4869K	5	52	24.1
HT4969	5	52	23
HT4869	5	52	23

RILEY FORGED SHACKLES

RILEY SHACKLE RANGE



HT5404S



HT5405S



HT5405N



HT5406S

Part No.	Length (mm)	Width Btwn. Arms (mm)	Pin Dia. (mm)	Breaking Load (kg)	Weight (g)
HT5404S	15	9	4	780	4.4
HT5405S	19	11	5	1250	9
HT5405N	19	5	5	1250	8.2
HT5406S	24	13	6.4	2500	19

TRAPEZE EQUIPMENT

DYNAMIC BEARING SYSTEM - Allow precise adjustment when loaded.

PRO-STRAP
Shockcord kind cold forged strap to allow shockcord attachment

WIDE ENTRY
Making it easier to connect with trapeze harness hook



TRAPEZE EQUIPMENT



HT4261



HT..60



CL253AN



CL253



HT6180



HPN196R

HPN196B

Part No.	Length (mm)	Line Dia. (mm)	Shackle Pin Dia. (mm)	Safe Working Load (kg)	Weight (g)
HT4261	175	4 - 6	-	350	69
HT..60	54	-	-	-	13
CL253AN	89	4 - 8	5	150	46
CL253	89	4 - 8	5	150	46
HT6180	38	2 - 3.5	5	300	15
HPN196R	40	2.5-3	-	-	8
HPN196B	40	2.5-3	-	-	8

Mast Tang



HT4041

T-Terminal Backing Plate



HT4283

Part No.	Length (mm)	Width (mm)	Fix Hole Size (mm)	Fixing Centres (mm)
HT4041	77	16	5	11
HT4283	44	19	4	31

BOOM FITTINGS



HT4142



HT4413



HT91104



SHT312



SHT873

Part No.	Fixing hole (mm)	Spar Width (mm)	Strap Thickness (mm)	Weight (g)
HT4142	5	50-80	1.5	22
HT4413	5	50-80	1.5	38
HT91104	5	50-80	2	89
SHT312	5.5	-	-	-
SHT873	5.5	-	-	-

TILLER EXTENSIONS & FITTINGS

FOAM GRIP
Non-slip giving fingertip control

CARBON FIBRE
Manufactured from 100% carbon fibre ultra light tube

TWIST LOCK
Extendable twist lock mechanism provides fast firm operation that won't slip

Extendable Carbon Fibre Tiller Extension

CARBON FIBRE
Manufactured to exact specification. Lighter and stiff for ultimate powered steering

CARBON TILLER EXTENSION RANGE



Carbon Extendable Tiller Extensions - Suitable for:		Part No.	Length (mm)	Length (ft)	Weight (g)
Sports Boats, Racing Dinghies		HT5508-13	800 - 1300	2'5" - 4'3"	169.5
470, 420, B14, F18 Catamarans		HT5511-19	1100 - 1900	3'6" - 6'3"	231.2
Carbon Tiller Extension - Suitable for:		Part No.	Length (mm)	Length (ft)	Weight (g)
Optimist		HT5506	609	2'	95.5
Cadet		HT5507	710	2'3"	103.4
Enterprise, Laser 3000		HT5509	900	2'10"	122
Buzz		HT5510	1000	3'3"	130.2
Finn, 470, 420, RS400, Laser 1, Laser 2, RS Feva, Solo		HT5512	1200	4'	147.1
RS 400 (long), Merlin Rocket, Int. Moth		HT5514	1400	4'10"	163.5
B14, RS600, Int. 14, Contender, Musto Skiff,		HT5519	1900	6'3"	205.2
Short armed Int. 14 Sailers, RS 700		HT5521	2100	6'9"	226.2
49er		HT5525	2500	8'3"	269.3

ALUMINIUM TILLER EXTENSION RANGE



Lightweight hard anodised aluminium extensions, complete with pro-tiller joint and foam grip. New graphite coloured anodising as standard in our variety of lengths.

Hard Anodised Aluminium Tiller Extensions. Suitable for:		Part No.	Length (mm)	Length (ft)	Weight (g)
Topper		HT4498TOP	975	3'2"	182
Laser 2, Laser 3000		HT4298	762	2'6"	147
470, 420, Enterprise, GP14, Pico		HT4498	915	3'	170
Laser, RS400, Finn		HT4698	1067	3'6"	195
RS B14, RS600, Int. 14, Contender, Spice		HT4798	1975	6' 6"	347
Optimist, Cadet		HT4898	609	2'	124

TILLER JOINTS & CLIP RANGE



Part No.	Description	Hole Size (mm)	Suit Tiller Ext. (mm)	Weight (g)
HT5098	Pro Tiller Joint	5	13 (min I/D)	22
HT5099	Universal joint (twist open)	5	13 (min I/D)	27
HT4098	Universal joint with bolt fixing	4	17 (max O/D)	41
HT.454	Tiller Retaining clip	-	-	16

Universal Dinghy rudder stock and tiller. Complete with tiller joint & cleat.



HT4598

HT91113

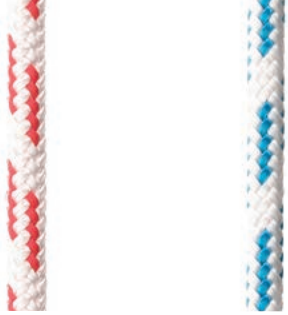


HOLT PERFORMANCE ROPE

ROPE RANGE

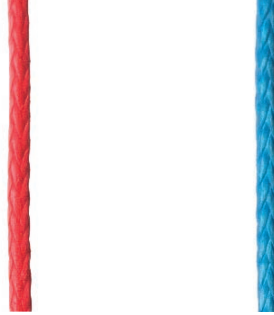
Holt Pro-Sheet

12 Strand Dyneema® Core with light-weight high wearing polyester cover.



Holt Pro-Line

12 Strand SK75 Dyneema® UV Protective Coating



Holt Ultra-Line

12 Strand Vectran® UV Protective Coating



USAGE:

Easy to splice
Suitable for
Sheets, control
lines, halyards,
vangs, cunning-
hams & backstay
systems

Holt Performance Rope

Description	Code	Dia. (mm)	Colour	Ave Break Load (kg)	Length on Reel (m)
2.5mm Pro-Line Red	HPR..1	2.5mm	Red	569	100
2.5mm Pro-Line Blue	HPR..2	2.5mm	Blue	569	100
3.5mm Pro-Line Red	HPR..3	3.5mm	Red	995	100
3.5mm Pro-Line Blue	HPR..4	3.5mm	Blue	995	100
2.5mm Ultra-Line	HPR..6	2.5mm	Graphite	627	100
3mm Ultra-Line	HPR..7	3mm	Graphite	993	100
6mm Pro-Sheet Red/White	HPR..8	6mm	Red/White	995	100
6mm Pro-Sheet White/Blue	HPR..9	6mm	White/Blue	995	100
8mm Pro-Sheet Red/White	HPR..10	8mm	Red/White	1300	100
8mm Pro-Sheet White/Blue	HPR..11	8mm	White/Blue	1300	100



Splicing Needles

Description	Code	Quantity
Splicing needle suitable for 2-3mm rope	S034	1
Splicing needle suitable for 3.5-6mm rope	S036	2

PRO LUBE / JAP TAPE

PRO-LUBE & JAPTAPE

PRO-LUBE HT5316

PTFE lubricant spray. Leaves a high slip environment that provides lasting lubricant



HA5316

JAP TAPE HT5040

Ribbed PTFE coated tape for packing out dagger board cases and mast gates.



HT5040